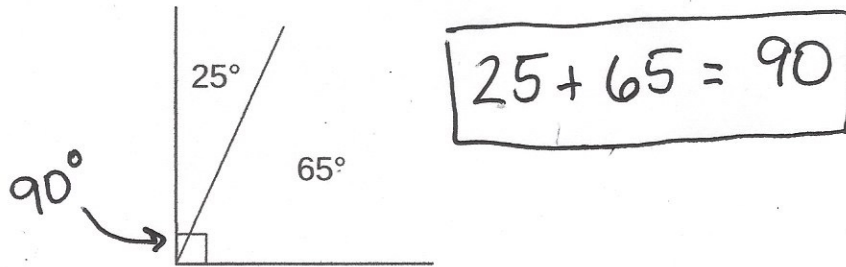


Geometry Bites

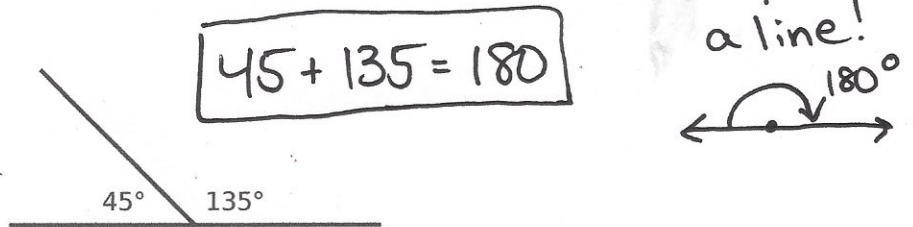
(A Little Bite of Geometry for Your Day)

Angles Getting Oppositional

Complementary Angles are angles that, added together, make up a 90° angle. The sum of their measures is 90.



Supplementary Angles are angles that, added together, make up a 180° angle. The sum of their measures is 180.



Vertical Angles, or Vertically Opposite Angles, are angles that are formed by two intersecting lines or line segments. They have equal measures.

